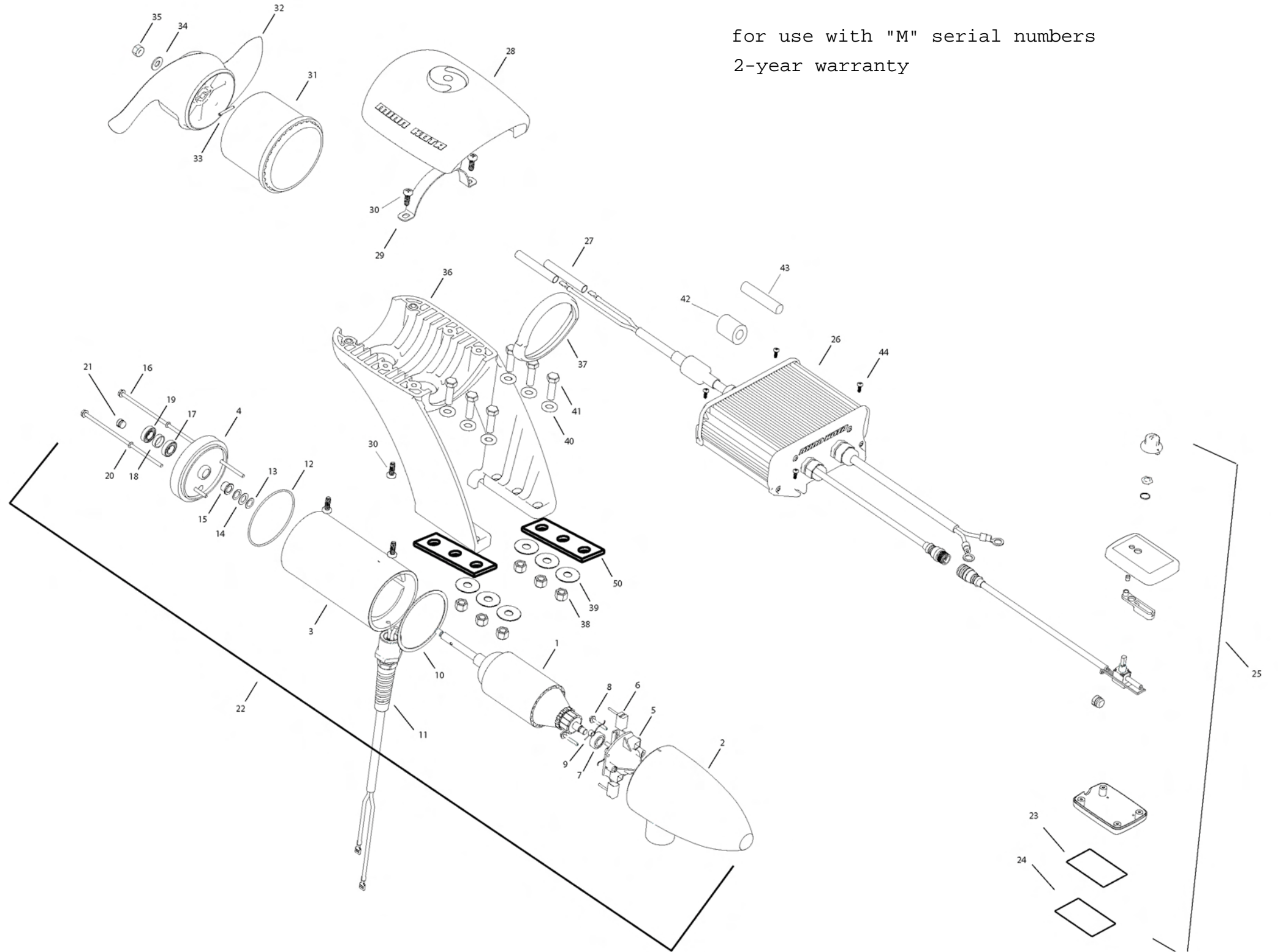


EM Riptide 55
12 VOLT 50 AMPS

for use with "M" serial numbers
2-year warranty



| | | |
|----|-----------|--|
| 1 | 2-100-207 | ARMATURE 12V 3.62 |
| 2 | 421-302 | BRUSH END HOUSING |
| 3 | 2-200-301 | CENTER HOUSING ASSEMBLY |
| 4 | 2-400-338 | PLAIN END ASSY (CONTAINS 4, 15, 17, 18, 19, 21) |
| 5 | 2-600-168 | BRUSH PLATE ASSEMBLY (CONTAINS 5, 6, 9) |
| 6 | 188-036 | BRUSH |
| 7 | 140-010 | BEARING |
| 8 | 830-007 | SCREW #8-32 |
| 9 | 975-040 | BRUSH SPRING |
| 10 | 337-036 | GASKET |
| 11 | 2772917 | LEADWIRE ASSEMBLY |
| 12 | 701-081 | O-RING |
| 13 | 990-067 | WASHER STEEL |
| 14 | 990-070 | WASHER NYLATRON |
| 15 | 144-049 | FLANGE BEARING |
| 16 | 830-042 | THRU-BOLT 10-32 X 8.83 |
| 17 | 880-003 | SEAL |
| 18 | 725-035 | PAPER TUBE |
| 19 | 880-006 | SEAL WITH SHIELD |
| 20 | 701-008 | O-RING THRUBOLT |
| 21 | 836-001 | ALUMINUM PLUG |
| 22 | 2387103 | MOTOR ASSY 12V 3.625 55# |
| 23 | 9950953 | VELCRO 1.5 X 2.0 LOOP |
| 24 | 9950950 | VELCRO 1.5 X 2.0 HOOK |
| 25 | 2990241 | HAND CONTROLLER |
| 26 | 2990246 | CONTROL MODULE |
| 27 | 2385401 | SHRINK TUBE [4 EA] |
| 28 | 2380211 | TOP CAP |
| 29 | 2383810 | STRAP, EM |
| 30 | 2383418 | SCREW 1/4-20 SELF TAPPING [6 EA] |
| 31 | 2381535 | ADAPTER RING, REAR |
| ■ | 1378170 | PROP KIT |
| 32 | 2091170 | PROPELLER |
| 33 | 2092600 | DRIVE PIN |
| 34 | 2151726 | WASHER 5/16, PROP |
| 35 | 2198400 | NUT, PROP ANODE |
| 36 | 2381940 | LOWER BRACKET |
| 37 | 2381530 | ADAPTER RING, FRONT |
| 38 | 2383122 | NUT 3/8-16 NYLOCK [6EA] |
| 39 | 2381726 | WASHER FENDER 3/8 X 1 1/4 OD [6 EA] |
| 40 | 2381728 | WASHER 3/8 [6 EA] |
| 41 | 2383422 | SCREW 3/8 X 1 1/4 [6EA] |
| 42 | 2307310 | FERRITE BEAD (EUROPEAN MOTORS ONLY) |
| 43 | 2075401 | HEATSHRINK (EUROPEAN MOTORS ONLY) |
| 44 | 2373427 | SCREW #12 X 5/8 [4 EA] |
| 50 | 2385110 | INSULATOR PAD, EM |
| ■ | 2994856 | BAG ASSY (CONTAINS 38-41,27,23,24,44, 50, & TIE WRAPS) |

2888460 SEAL & ORING KIT

* This item is part of an assembly. This item cannot be sold separately due to machining and /or assembly that is required.

